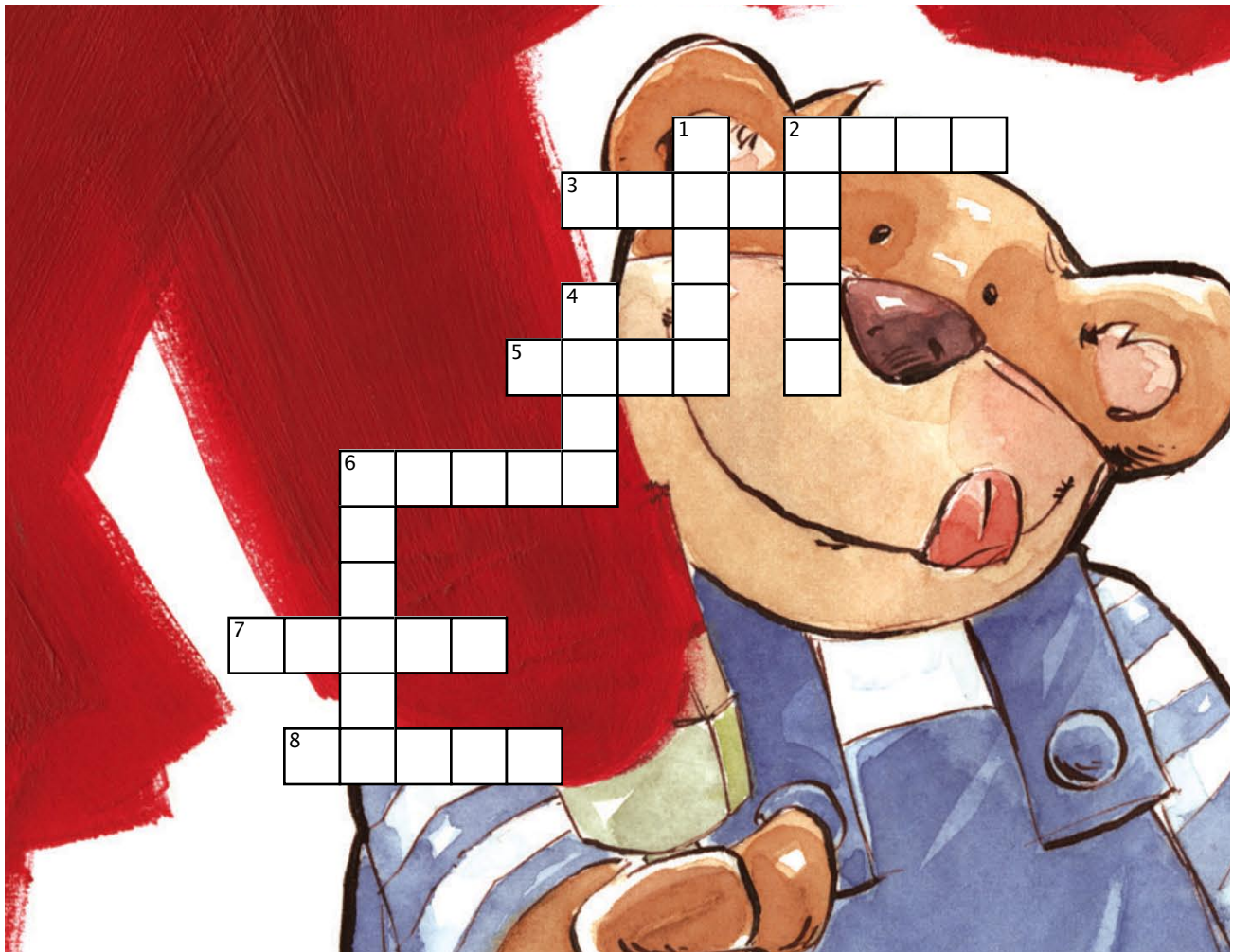


Cart Before Horse Crossword

Waltur Puts the Cart Before the Horse



Across

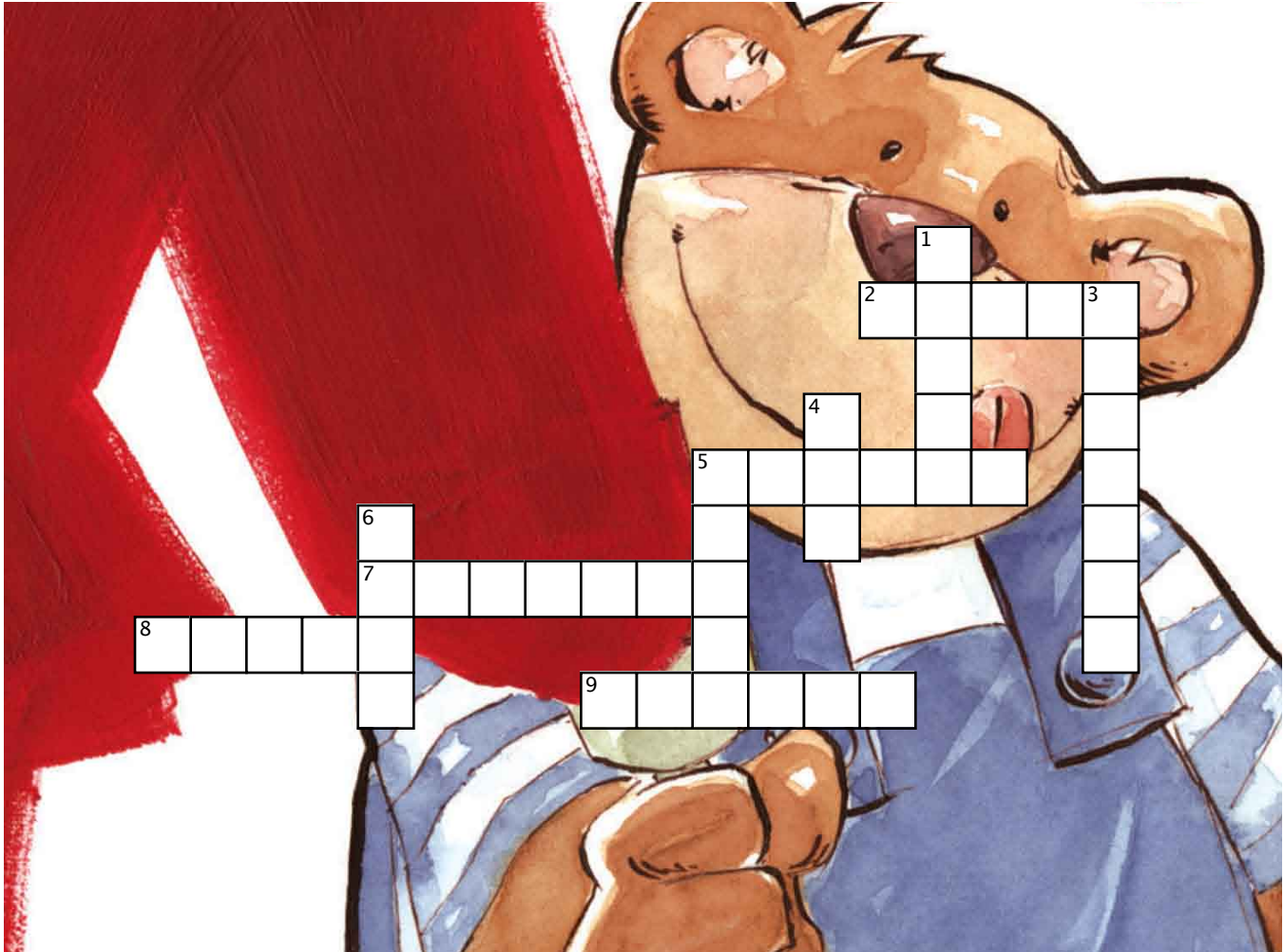
2. a raised part of the ground
3. a four-footed animal with hooves and a mane
5. to cook in an oven
6. bright or clever
7. a food made by bees
8. not correct, not true

Down

1. to put words on paper
2. not light
4. a wagon often pulled by a horse
6. earlier

Paints into Corner Crossword

Waltur Paints Himself into a Corner



Across

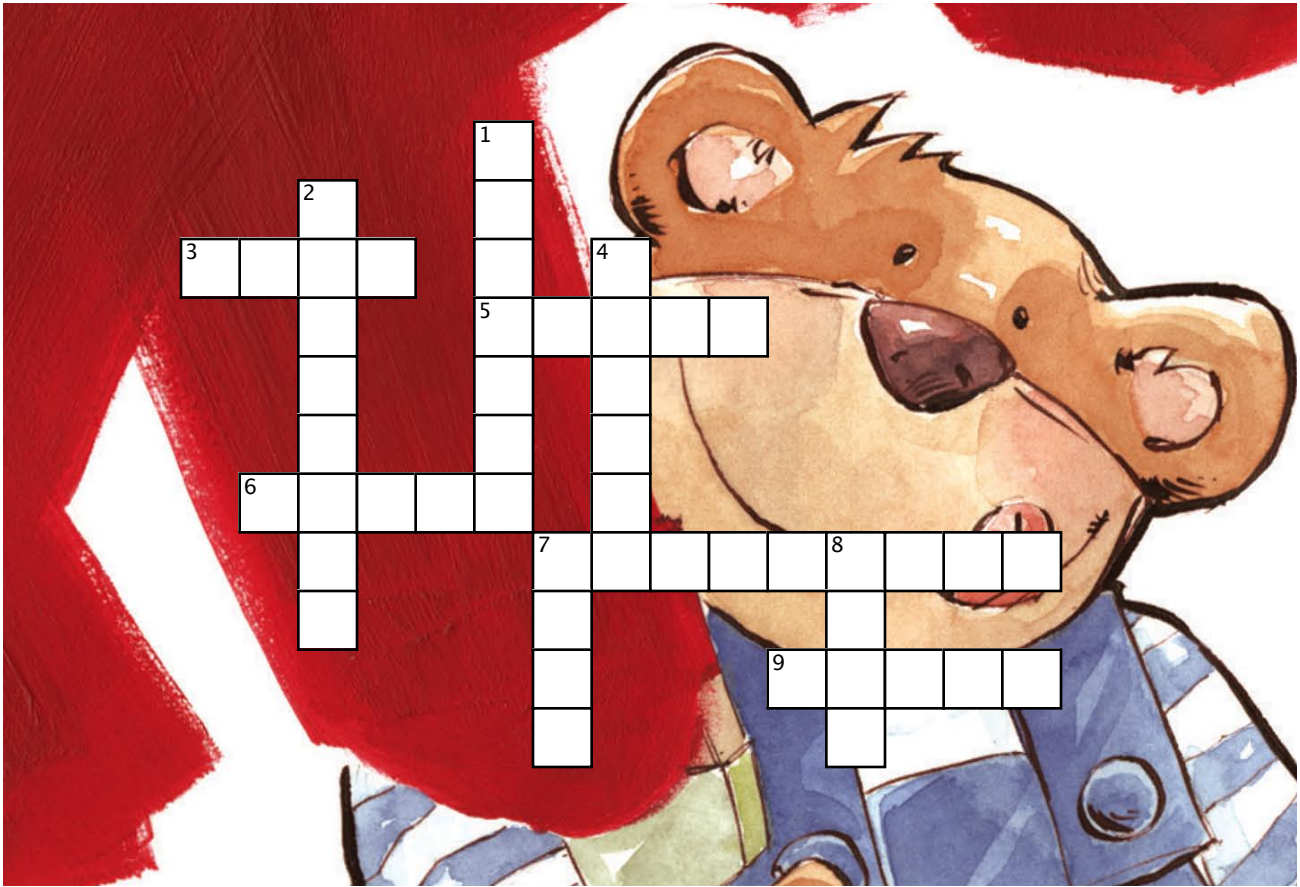
2. It is in a can
5. Matilda tells Waltur not to paint himself into one
7. Waltur's friends sit _____
8. Waltur paints it
9. Waltur paints himself into a _____

Down

1. Waltur carries it outdoors
3. Waltur does not want to be _____ by the corners
4. Waltur must wait for the paint to _____
5. Waltur's friends _____ for him
6. Painting is hard _____

Sleeping Dogs Crossword

Waltur Won't Let Sleeping Dogs Lie



Across

3. to move on foot
5. to run after and try to catch
6. a large stream of water
7. the first meal of the day
9. an outside part of a house, often with a roof

Down

1. it pulls other farm machines
2. not awake
4. one who grows crops or raises animals
7. the male opposite of a cow
8. it is what is eaten